





MediCap™ USB150

Medical Image
Capture Device

User Guide



Precautions for Use

	CAUTION RISK OF ELECTRIC SHOCK DO NOT OPEN	
<p>The lightning flash with arrowhead symbol, within an equilateral triangle is intended to alert the user to the presence of uninsulated 'dangerous voltage' within the product's enclosure that may be of sufficient magnitude to constitute a risk of electric shock to persons.</p>	<p>CAUTION: TO REDUCE THE RISK OF ELECTRIC SHOCK DO NOT REMOVE COVER (OR BACK), NO USER SERVICEABLE PARTS INSIDE. REFER SERVICING TO QUALIFIED SERVICE PERSONNEL.</p>	<p>The exclamation point within an equilateral triangle is intended to alert the user to the presence of important operating and maintenance (servicing) instructions in the literature accompanying the appliance.</p>

WARNING:

To reduce the risk of fire or shock hazard, do not expose this equipment to rain or moisture.

CAUTION:

To reduce the risk of fire or shock hazard and annoying interference, use the recommended accessories only.

CANADA ONLY / CANADA SEULEMENT

Caution:

This digital apparatus does not exceed the Class A limits for radio noise emissions from digital apparatus set out in the Radio Interference Regulations of the Canadian Department of Communications.

Attention:

L'interférence radioélectrique générée par cet appareil numérique de type A ne dépasse pas les limites énoncées dans le Règlement sur les perturbations radioélectriques, section appareil numérique, du Ministère des Communications.

Disposal Method: Use your local regulations for proper disposal.

Important Safety Instructions

1. Read all of these instructions.
2. Keep these instructions.
3. Heed all warnings in these instructions.
4. Follow all of these instructions.
5. Do not misuse this apparatus.
6. Clean only with a dry cloth.
7. Do not block any of the ventilation openings. Install in accordance with the manufacturer's instructions.
8. Do not install near any heat source such as radiators, heat registers, stoves or other apparatus that produces heat.
9. Do not tamper with the polarized or grounding-type plug. A polarized plug has two types of blades with one being wider than the other. A grounding-type plug has two blades and a third grounding prong. The wide blade or third prong is provided for your safety. When the provided plug does not fit into your outlet, consult an electrician for replacement of the obsolete outlet.
10. Protect the power cord from being walked on or pinched especially near plugs, outlets, and the point where the cord exits from the apparatus.
11. Only use attachments/accessories specified by the manufacturer.
12. Use only with a cart, stand, tripod, bracket or table specified by the manufacturer, or sold with the apparatus. When a cart is used, use caution when moving the cart/apparatus combination to prevent the cart from tipping over and to avoid injury.
13. Unplug this apparatus during lightning storms or when unused for long periods of time.
14. Disconnection Method: Switch off AC power by the rocker switch on the rear panel, disconnect power cord.
15. Rocker switch on the rear panel is a single port switch. In switch OFF position, neutral wire is still connected to the unit. To make sure of the complete unit disconnection from the mains, please use disconnection method (14).
16. Do not place vessels containing water or other liquids (such as vases, etc.) on top of the apparatus. Do not splash water on top of the apparatus.
17. Refer all servicing to qualified service personnel. Servicing is required when the apparatus has been damaged in any way, such as when a power supply cord or plug has been damaged, liquid has been spilled on the apparatus, objects have fallen into the apparatus, the apparatus has been exposed to rain or moisture, or does not operate normally, or has been dropped.

Table of Contents

Introduction	5
Ordering Information	5
Technical Support	5
Front Panel.....	6
Back Panel	7
Connections	8
Quick Start Guide.....	9
Connecting the MediCap USB150	10
Inserting a USB Flash Drive.....	10
Capturing Images.....	11
Two Types of Memory.....	11
Reviewing Images.....	12
Deleting Images	12
Using the On-Screen Menus.....	12
Saving Images to the USB Flash Drive.....	13
Clearing Internal Memory.....	13
Saving the Same Images onto Multiple Flash Drives.....	14
Transferring Images from the USB Flash Drive to Your Computer	14
Other Features	15
Appendix A: Key to LED Lights	16
Appendix B: System Messages	16
Appendix C: Specifications	18
Appendix D: MediCapture Limited Warranty.....	19

Introduction

The MediCap™ USB150 allows you to easily capture digital medical images from virtually any analog medical imaging device that has standard BNC or S-Video output.

To get started, connect the USB150 as shown on page 8 and insert a MediCapture brand USB flash drive into the front panel. Then use your medical imaging device as you normally do. When you see an image on your monitor that you would like to capture, press the Capture button to save the image. You can continue pressing the Capture button to save more images.

When you are done with your imaging session, press the Save To USB button to save all the images onto the USB flash drive. Then you can remove the flash drive and insert it in a Windows computer that has a USB connection. The MediCapture Image Transfer wizard will help you transfer the images onto your computer. You can then take full advantage of the power of digital imaging; you can view your images, archive them, share them on a network, email them, and so on.

To get started quickly with your USB150, review the front panel, back panel, and connections diagrams on the following pages and then refer to the “Quick Start Guide” on page 8.

Ordering Information

The MediCap™ USB150 requires MediCapture™ brand USB flash drives available from MediCapture dealers (flash drives from other manufacturers are not compatible with the USB150). To locate a MediCapture dealer, please visit the “Buy” web page at www.medicapture.com.

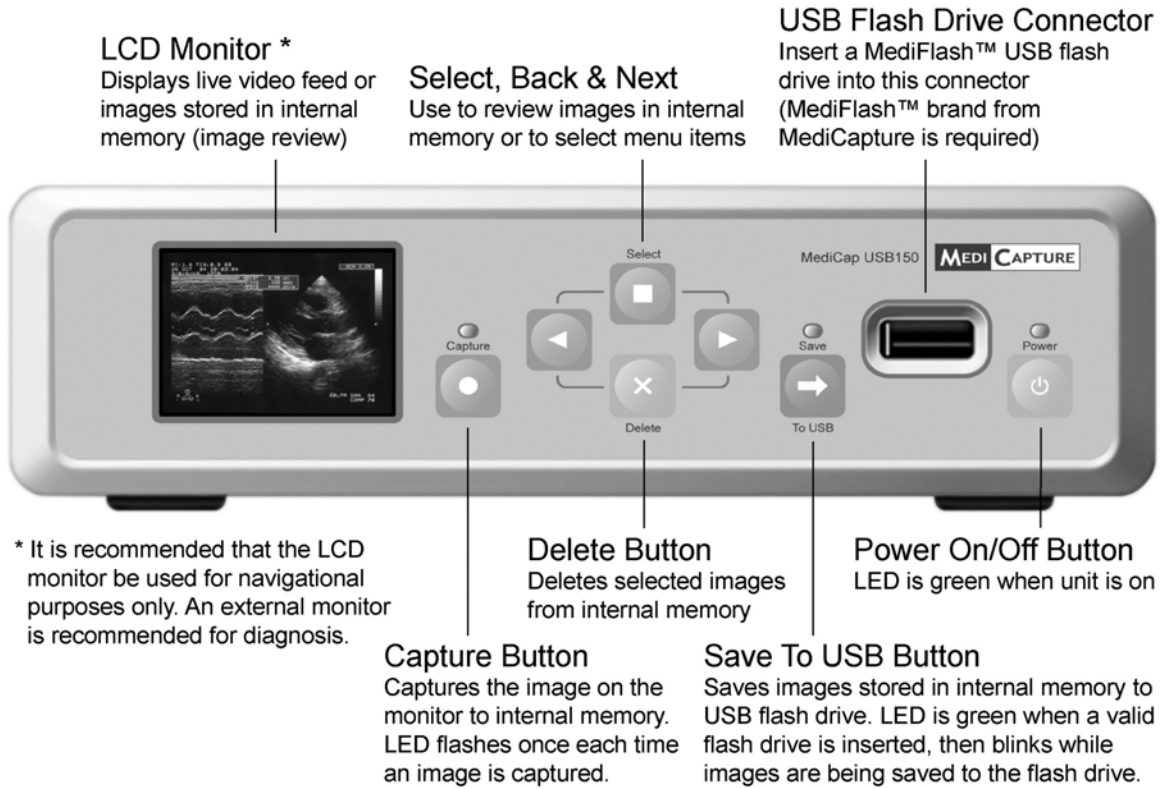
Technical Support

For technical support and other questions, please visit MediCapture’s web site at www.medicapture.com or call 888-922-7887 (toll free from within the USA) or 503-445-6935 (from outside the USA).

MediCapture Inc.

580 West Germantown Pike, Suite 103
Plymouth Meeting, PA 19462

Front Panel



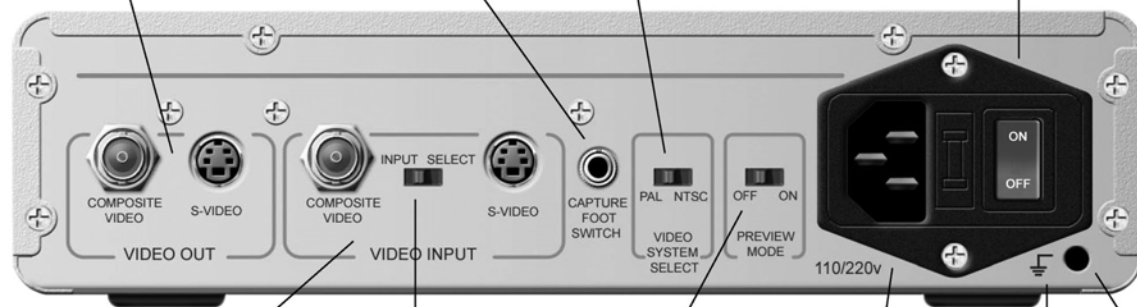
Back Panel

Foot Switch Connector (optional)
Foot switch performs the same function as the Capture Images button on the front panel. Standard 3.5mm mini-jack.

Video Out connectors
Composite Video (BNC) or S-Video. Connect one of these to the Monitor.

Video System Select Switch
Set to PAL or NTSC, depending on the type of video source. NTSC is common in the U.S., Canada and Japan. PAL is common in Europe and China.

Master Power Switch
Use this switch when resetting, or moving the unit. For day-to-day use, the Power button on the front panel is recommended instead.



Video Input Connectors
Composite Video (BNC) or S-Video. Connect one of these to the video source (e.g., ultrasound, endoscopic camera, etc.)

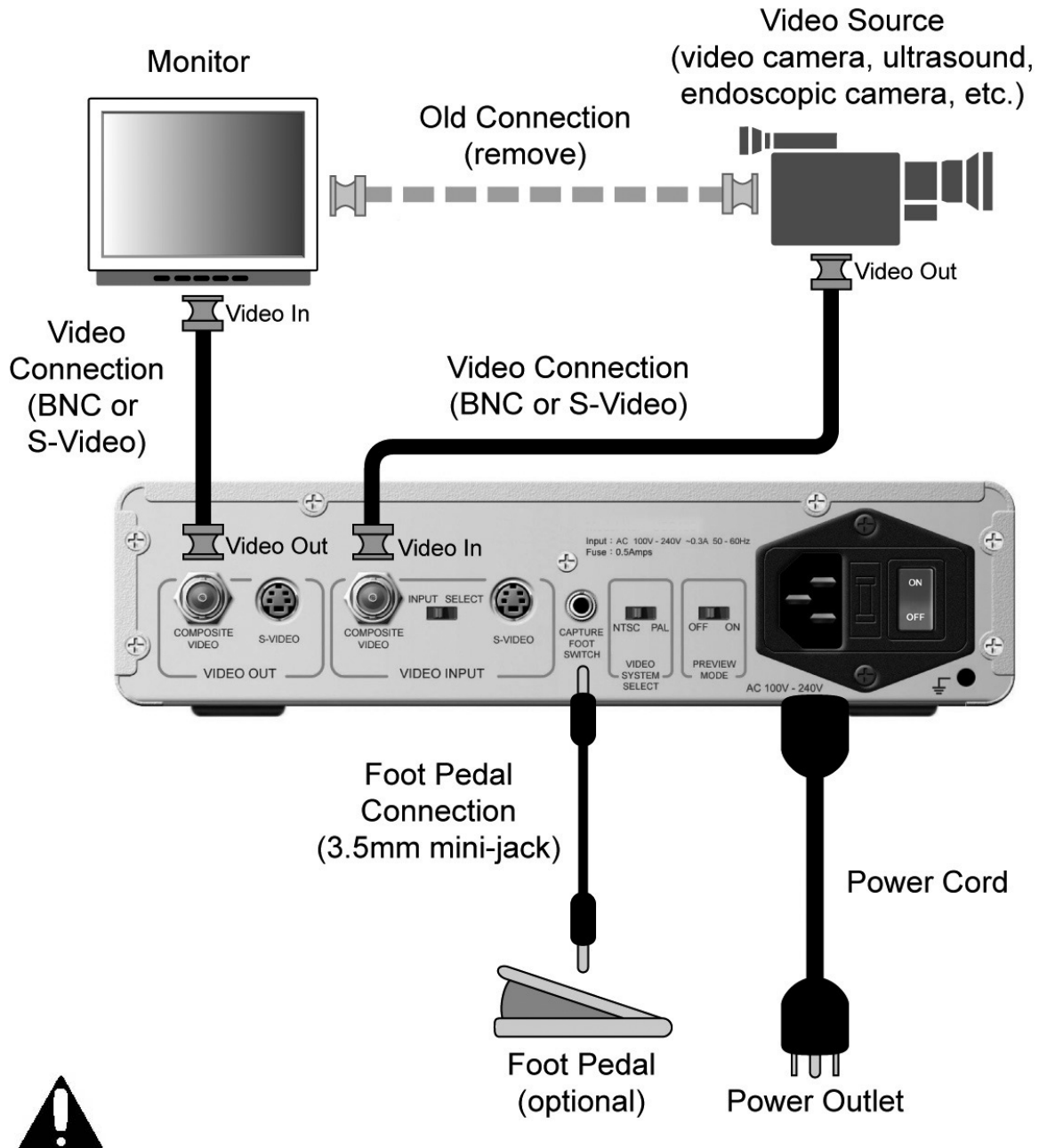
Preview Mode Switch
Set to On for Preview Mode (image on monitor will "freeze" for several seconds each time you capture an image).

Grounding Mark
Ground Connector
Use for grounding the unit (if needed)

Input Select switch
Set to Composite Video or S-Video, depending on which connection you have used.

Power connector
Use the supplied power cable to connect to a 100V - 240V outlet. The correct voltage is set automatically.

Connections



The unit is for exclusive interconnection with IEC60601 certified equipment in the patient environment and IEC60XXX certified equipment outside of the patient environment.

A certified power supply cord set must be used with this equipment. The relevant national installation and/or equipment regulations shall be considered. The power supply cord shall be not less robust than an ordinary tough rubber-sheathed flexible cord according to IEC 60245 (designation 53) or ordinary polyvinyl chloride sheathed flexible cord according to IEC 60227 (designation 53).

The power cord set shall have a power supply cord with conductors providing a cross-sectional area of $3 \times 0.75\text{mm}^2$ minimum.

Quick Start Guide

1. Connect the USB150 as shown on page 8 and turn it on.
2. Insert the supplied MediCap USB flash drive in the front panel. (This is a small “stick” with a silver connector on one end.)
3. Use your imaging equipment as you normally do, except now you can capture still images onto the USB flash drive.
4. When you see an image on the monitor that you would like to capture, press the *Capture* button.
5. You can review the images you have captured by using the *Back* and *Next* buttons (< >) on the front panel.
6. **IMPORTANT:** When you **finish** capturing **all** the images you want, press the *Save To USB* button. This copies all the images from internal memory in the box to the memory in the flash drive. *You must follow this step to save your images.*
7. Remove the flash drive from the USB150.
8. Insert the flash drive in the USB connector of a Windows computer or laptop. Use the supplied USB extension cable if needed.
9. Install the MediCapture Image Transfer Wizard. To do so, double-click on My Computer. Double-click on the USB flash drive letter, for example, MEDICAP - USB (D:). Then double-click on SETUP.EXE. Follow the prompts to install the wizard. (You only need to perform this installation step once. In future, you can skip this step.)
10. Locate the MediCapture Image Wizard icon on your desktop and double-click on it. The wizard will guide you through the process of transferring images from you flash drive to your computer.

Make sure the “Input Select” and “PAL/NTSC” switches on the back panel are properly positioned.

You must use a MediCapture brand flash drive. Drives from other manufacturers will not work with the USB150.

Follow the on-screen instructions. They will guide you while using the USB150.

After you press the “Save To USB” button, it may take a minute or up to several minutes for the images to be saved. Do not remove the flash drive until the green light above the Save To USB button stops blinking.

Windows 98, ME, NT, 2000, or XP required

You must use the wizard for the transfer process, because it performs important processing on the images during the transfer. The images on your flash drive are not useable on your computer until they have been processed by the image transfer wizard.

That’s it! You’ve captured your first batch of digital images!

Connecting the MediCap USB150

To connect the MediCap USB150, see the diagram on page 8.

The MediCap USB150 is very easy to set up. It connects “in-line” between a monitor and a video source (for example, an ultrasound camera, surgical video camera, etc.)

1. If you are adding the USB150 to imaging equipment that you are already using, then begin by unplugging the existing video cable that connects the monitor and the video source.
2. Connect a cable between the “Video Out” on the video source and the “Video Input” on the back panel of the USB150. Then connect another cable between the “Video Out” on the USB150 and the “Video Input” on the monitor.
3. Plug in the power cord.
4. As an option, you can also connect a foot pedal to the “Capture Foot Switch” connector on the back panel of the USB150. The foot pedal performs the same function as the Capture button on the front panel.

To make the video connections, you can use BNC or S-Video cables. If your camera or monitor uses RCA connectors, you will need to obtain a BNC-to-RCA adapter.

Inserting a USB Flash Drive

Before you begin using your USB150, insert the supplied MediCapture brand USB flash drive in the USB connector on the front panel.

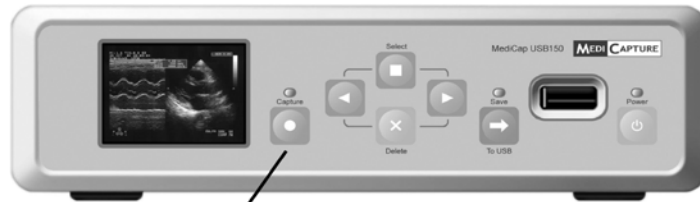
You must use a MediCapture brand flash drive. Drives from other manufacturers will not work with the USB150.



NOTE: MediCapture brand flash drives come in a variety of models. The flash drive supplied with your USB150 may not look the same as the one in the above illustration, but it will function in the same way.

Capturing Images

Capturing images with your USB150 is simple. When you see an image on your monitor that you would like to capture, simply press the *Capture* button on the front panel. The image will be saved to the internal memory inside the USB150 box (later, you will copy your images from this internal memory to the USB flash drive).



Capture Images button

Each time you press the *Capture* button, one still image is captured.

Two things will help you confirm that you have captured an image:

- The image number will be displayed in the upper-left corner of the monitor.
- You will hear a “beep.”

IMPORTANT: Images are captured to “internal memory” inside the USB150. After you finish your imaging session, you must press the “Save To USB” button to copy the images from internal memory to the USB flash drive.

If “Preview Mode” is on, the screen image will freeze for about three seconds each time you capture an image. The “Preview Mode” on/off switch is on the back panel.

Two Types of Memory

It’s important to note that there are two types of memory used with the USB150: Internal memory and USB flash drive memory.

Internal memory is inside the USB150 box – it is used to temporarily store images as you capture them.

USB flash drive memory is inside the plastic “stick” that you insert in the front panel.

You **must** press the *Save To USB* button when you have finished your imaging session. This copies your images from internal memory to the memory in your USB flash drive.

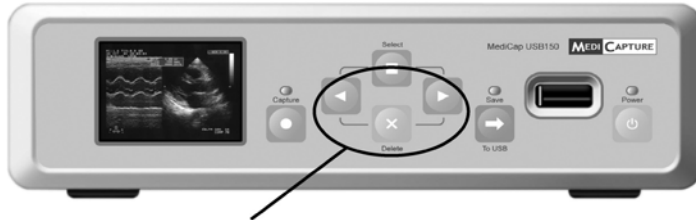
Internal memory is cleared when the machine is turned off or when you select “Clear internal memory” in one of the on-screen menus.

Once you have saved images to your USB flash drive, they will be stored on the drive until you move them off onto your computer.

Reviewing Images

At any time during an imaging session, you can review the images you have already captured to internal memory. Simply press the *Back* and *Next* buttons on the front panel. This will step you through the images in internal memory.

To stop reviewing images and resume capturing images, simply press the Capture button.



Back, Next, and Delete buttons
Use for reviewing and deleting images

After you review all of the images, a menu will be displayed allowing you to do any of the following: continue reviewing the images, capture more images, or copy the images from internal memory to the USB flash drive (for more details, see the section titled “Saving Images to the USB Flash Drive” on page 13).

The image review feature only displays images that are stored in internal memory. It does not display images that are on the USB flash drive. To display images that are on the flash drive, remove it from the USB150 and insert it in a computer.

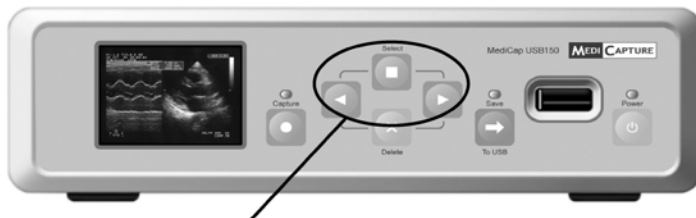
Deleting Images

While you are reviewing images, you can delete them from internal memory. To do so, press the Delete button on the front panel (hold down the Delete button for about 3 seconds). This will delete the image currently displayed on the monitor.

Using the On-Screen Menus

The MediCap USB150 displays helpful messages and menus on the monitor screen.

When a menu is displayed, you can scroll through the menu choices by using the *Back* and *Next* buttons on the front panel. To select a menu choice, press the *Select* button.



Back, Next, and Select buttons
Use for navigating through menus

Saving Images to the USB Flash Drive

Each time you press the Capture button, a still image is saved to internal memory located inside the USB150 box. When you finish your imaging session, you **must** press the *Save To USB* button to copy the images from the internal memory to the USB flash drive memory **before** you remove the flash drive. After the images have been copied, you can safely remove the flash drive to transport your images to your computer.

IMPORTANT NOTE!

While the images are being copied to the flash drive, the on-screen message “Saving Images to USB” will be displayed. Also, the green LED light above the *Save To USB* button will blink on and off. The copy process may take several minutes depending on the number of images.

When all the images have been copied to the flash drive, the message, “All Images Saved to USB” will be displayed and the LED light above the Save button will stop blinking.

DO NOT REMOVE THE FLASH DRIVE UNTIL THE GREEN LED LIGHT ABOVE THE SAVE BUTTON HAS STOPPED BLINKING.

Clearing Internal Memory

From time to time, you will need to clear the internal memory to make room for more images (for a description of internal memory, see page 11). Usually, you will do this after you save images from internal memory to the flash drive (that is, after you press the *Save To USB* button).

After saving images to the flash drive, a menu will be displayed that allows you to clear the internal memory. Since all of your images are now on the flash drive, you usually do not need to keep them in internal memory any longer so you will select “Clear Internal Memory” in the menu. An exception is if you want to load the same images onto a second flash drive (see the next section).

Clearing internal memory frees up the entire internal memory. You can also free up some of the internal memory by deleting individual images as described on page 12.

Saving the Same Images onto Multiple Flash Drives

After saving images from the internal memory to a flash drive, you can remove the flash drive, insert another flash drive and save the same batch of images to that drive. In this way, you can save the same images to as many drives as you want.

For example, suppose you have just finished an imaging session with a patient and you want to keep a flash drive containing the images, but you also want to give the patient a flash drive with the images. To do so, press the *Save To USB* button. After the images are saved from internal memory to the flash drive, a menu will be displayed allowing you to “Clear internal memory” or “Save to another USB.” Remove the current USB flash drive from the front panel, insert another one, and select “Save to another USB.” You can repeat this procedure to save to additional flash drives.

Once you have saved the images to as many flash drives as you want, you can select “Clear internal memory” because you will no longer need to keep the images in internal memory (and you will be freeing up needed memory space for more images).

Transferring Images from the USB Flash Drive to Your Computer

To transfer images from your flash drive to your computer, you use the MediCapture Image Transfer Wizard (mcwiz.exe). You **must** use this wizard for the transfer process. **DO NOT TRANSFER IMAGES FROM YOUR FLASH DRIVE BY "DRAGGING AND DROPPING."** This is because, in addition to transferring the images, the wizard also converts them to a format that is usable on your computer. **THE "RAW IMAGES" ON YOUR FLASH DRIVE ARE NOT USEABLE ON YOUR COMPUTER UNTIL THEY HAVE BEEN PROCESSED BY THE WIZARD.**

System Requirements:

- Windows 98, ME, NT 2000, or XP
- USB support
- At least 32MB RAM, 600MHz processor, 1GB free space on hard drive
- If using Windows 98, you may need to download USB drivers from www.medicapture.com

If the USB connection on your computer is in the back, you can plug in the supplied USB cable so that you do not need to reach behind the computer each time you want to connect the flash drive. If the USB connector on your computer is easily accessible, you do not need the USB cable.



To install and use the Image Transfer wizard:

1. Insert the flash drive in the USB connector of your computer.
2. On your computer, browse to the flash drive. To do so, double-click on My Computer and locate the flash drive. It will have a name like MEDICAP-USB. Double-click on it, then double-click on SETUP.EXE. This will open a window that installs the wizard (mcwiz.exe) on your computer. Follow the installation prompts. (IMPORTANT NOTE: You only need to do this step the first time you use the wizard. After that, you can skip this step.)
3. Locate the MediCapture Image Wizard icon on your desktop. Double-click on it to open the wizard. The wizard will guide you through the process of transferring images to your computer.

It's a good idea to regularly use the Image Transfer Wizard to move images off your flash drive onto your computer. This will free up memory space on the flash drive so you can capture more images.

Other Features

Using a Foot Switch

A standard connector for a foot switch is located on the back panel. Using a foot switch will allow you to capture images “hands free.” The foot switch serves the same function as the Capture button on the front panel.

Note that the foot switch connector responds to a simple “closed contact.” In other words, if you have other types of switches that operate using a closed contact, you can also plug them into the foot switch connection and use them to trigger an image capture. For example, a “closed contact” timer could be used to capture images at regular intervals.

Preview Mode

If Preview Mode is on, then each time you capture an image it will be “frozen” on the screen for a few seconds. This allows you to confirm that you have captured the image you wanted.

The Preview Mode on/off switch is located on the back panel.

You don't need to wait until a freeze frame is finished to capture a new image. In other words, even when Preview Mode is on, you can capture a series of images in rapid succession.

Appendix A: Key to LED Lights

Power LED

Dark: Unit is off. The unit is not plugged into a live electrical outlet or the Power switch on the back of the unit is in the Off position.

Amber: Unit is in standby mode. The unit is plugged into a live electrical outlet and the Power switch on the back of the unit is in the On position, but the unit is not yet “On.” To turn it on, press the Power button on the front of the unit.

Green: Unit is on.

Capture LED

Green blink: Image capture. Blinks once each time the Capture button is pressed.

Save LED

Dark: No USB flash drive is connected.

Steady Green: A MediCapture USB flash drive is connected and ready for images.

Blinking Green: Images are in the process of being saved from internal memory to the USB flash drive. *Do not remove the flash drive until the blinking stops.*

Steady Red: A non-MediCapture brand USB flash drive is connected (only flash drives manufactured by MediCapture can be used).

Blinking Red: There is a problem with the flash drive. Try using another flash drive.

Appendix B: System Messages

ALERT! Internal Memory is FULL

Description: Images are captured to internal memory, but when you see this message, you cannot capture any more images because the internal memory is full.

Action: Select the “Save images to USB” menu choice at the bottom of the screen (to do so, use the *Back*, *Next*, and *Select* buttons on the front panel). This will copy the images to the USB flash drive. Then you can clear the internal memory to make more room for capturing images. See the “Clearing Internal Memory” section on page 13.

ALERT! USB memory NOT sufficient.

Delete some images or insert new USB memory.

Description: This message will be displayed after you press the *Save To USB* button, and the system determines that there is not enough memory available in the USB flash drive to hold the images that it is trying to copy from internal memory to the flash drive.

Action: Remove the USB flash drive from the front panel and insert it in a Windows computer (98, ME, NT, 2000 or XP required). Follow the procedures described on page 14 to transfer any images on the flash drive to your computer and then clear the memory on the flash drive. Then you can re-insert the flash drive in the front panel of the USB150 and press the *Save To USB* button again.

If the flash drive still does not have sufficient memory, you will need to delete some images from internal memory by using the *Review Images* and *Delete* buttons on the MediCap USB150 front panel.

***ERROR! Images NOT saved to USB.
Insert USB memory and press SAVE TO USB MEMORY button.***

Description: This message will be displayed if you remove the USB flash drive before the images in internal memory have been saved.

Action: Insert a MediCapture USB flash drive and press the *Save To USB* button again. If the USB flash drive does not have sufficient memory, you will need to follow the “Action” procedures in the previous system message (*ALERT! USB memory NOT sufficient*).

WRONG USB DEVICE.

Description: This message will be displayed if you insert a non-MediCapture brand USB flash drive in the front panel. Only MediCapture brand flash drives can be used.

Action: Contact your MediCapture dealer for information on how to obtain the proper flash drives.

ALERT! Cannot read USB flash drive.

Description: This message will be displayed if you insert a USB flash drive in the front panel and the system is unable to connect with it. The flash drive may be defective or broken.

Action: Contact your MediCapture dealer for information on how to obtain a new flash drive.

Appendix C: Specifications

Model	MediCap USB150. Digital medical image capture device. Saves digital images from analog video sources to USB flash drive.
Case	Rugged metal case with high-impact plastic faceplate
LCD Monitor	2 1/2", full color (for navigation only, not for diagnosis)
Buttons	Sealed membrane, fluid resistant
Video	PAL/NTSC (switch selectable) S-video or composite BNC connections for both input and output
Foot Switch	Hands-free capture Standard 3.5mm mini jack
Mechanical	Size: 240 x 200 x 63mm / 9.5 x 7.9 x 2.5" Weight: 1.5kg / 3lb 5oz
Environmental	Storage and transportation: -40° to +85° C Operating: -20° to +40° C
Power	100-240V 50-60Hz 10W 3-prong AC jack
Media	MediCapture brand USB flash drives (required)
Image Formats	DICOM, DICOM True Color, JPEG, BMP, PCX color, PCX grayscale
Image Size	800 x 600 pixels
Kit Contents	MediCap USB150, USB flash drive, power cord, BNC video cable, S-video cable, BNC-to-RCA adapter, RCA-to-BNC adapter, User Guide

Certifications



Medical Equipment with respect to electrical shock, fire and mechanical hazards only in accordance with IEC 60601-1, UL 60601-1, CSA C22.2 No.601.1 E 306417 / 34A8



This device complies with Part 18 of the FCC Rules.
FCC ID UIOUSB-150

RoHS Compliant

Classification Class I Equipment
Mode of operation: continuous

No AP/APG
No Applied Part

Appendix D: MediCapture Limited Warranty

MediCapture Inc. ("MediCapture") warrants the product(s) listed below to be free of defects in materials and workmanship for a period of one (1) year. Should warranty service be required, the warranty period will be extended by the number of days required to restore normal operation and return the product(s).

MediCapture MediCap™ USB150 medical image capture device

Warranty Conditions

If, during the year that immediately follows the purchase date, a product covered by this warranty is found to have a defect in material or workmanship, MediCapture (or a service facility authorized by MediCapture) will restore the product to its original operating condition without charge for parts or labor. Note: MediCapture reserves the right to utilize reconditioned subassemblies as warranty replacements.

This warranty applies only to those products sold by retailers authorized by MediCapture to sell such products and is enforceable by the original purchaser only.

THIS WARRANTY IS APPLICABLE IN THE FIFTY (50) STATES OF THE USA AND THE DISTRICT OF COLUMBIA ONLY. IT IS NOT APPLICABLE IN THE POSSESSIONS OR TERRITORIES OF THE USA OR IN ANY OTHER COUNTRY. THIS IS THE ONLY EXPRESS WARRANTY WHICH MEDICAPTURE MAKES IN CONNECTION WITH THE ABOVE LISTED PRODUCT(S). ANY IMPLIED WARRANTIES APPLICABLE TO THESE PRODUCTS ARE LIMITED TO THE DURATION OF THE EXPRESS WARRANTY. MEDICAPTURE SHALL NOT BE LIABLE FOR LOSS OF REVENUES OR PROFITS, INCONVENIENCE, EXPENSE FOR SUBSTITUTE EQUIPMENT OR SERVICE, STORAGE CHARGES, LOSS OR CORRUPTION OF DATA, OR ANY OTHER SPECIAL, INCIDENTAL, OR CONSEQUENTIAL DAMAGES CAUSED BY THE USE OR MISUSE OF, OR INABILITY TO USE, THE ABOVE LISTED PRODUCT(S), REGARDLESS OF THE LEGAL THEORY ON WHICH THE CLAIM IS BASED, AND EVEN IF MEDICAPTURE HAS BEEN ADVISED OF THE POSSIBILITY OF SUCH DAMAGES. IN NO EVENT SHALL THE RECOVERY OF ANY KIND AGAINST MEDICAPTURE BE GREATER IN AMOUNT THAN THE PURCHASE PRICE OF THE PRODUCT(S) LISTED ABOVE AND CAUSING THE ALLEGED DAMAGE. WITHOUT LIMITING THE FOREGOING, YOU ASSUME ALL RISK AND LIABILITY FOR LOSS, DAMAGE OR INJURY TO YOU AND YOUR PROPERTY AND TO OTHERS AND THEIR PROPERTY ARISING OUT OF USE OR MISUSE, OR INABILITY TO USE, THE ABOVE LISTED PRODUCT(S) NOT CAUSED DIRECTLY BY THE NEGLIGENCE OF MEDICAPTURE (SOME STATES DO NOT ALLOW LIMITATIONS ON HOW LONG AN IMPLIED WARRANTY MAY LAST, OR DO NOT ALLOW THE EXCLUSION OR LIMITATION OF INCIDENTAL OR CONSEQUENTIAL DAMAGES, SO THE ABOVE EXCLUSION OR LIMITATION MAY NOT APPLY TO YOU).

This warranty gives you specific legal rights. You may also have other rights which vary from state to state. In the event any of the provisions of this warranty are found to be unenforceable, all remaining provisions shall retain full force.

Owner Responsibilities

- Read the User Guide completely.
- Warranty registration is not necessary. However, should warranty service be required, you must be able to provide proof of the purchase date and the identity of the seller who made the sale (either MediCapture or an authorized reseller). Please save your sales receipt and/or invoice.
- Make sure that the proof of purchase that you save contains the serial number and that it matches the number on the unit that you purchased.
- Depending on where you purchased your unit, promptly notify either MediCapture or the authorized reseller of any malfunction upon discovery.
- In the event service is required, return the product to an authorized MediCapture service center. All shipments must be PREPAID. No COLLECT shipments will be accepted. Products repaired under warranty by MediCapture, or an authorized service center, will be returned to the sender PREPAID.
- Products returned for service (in or out of warranty) MUST have a Return Authorization Number issued by MediCapture or an authorized service center.

Exclusions

IMPORTANT: The following conditions can cause this warranty to be unenforceable.

- Purchase of the product listed above from resellers NOT authorized by MediCapture to sell the product.
- Alteration or removal of the trademark, name, or identification number or serial number of the products.
- Use of parts or supplies (other than those sold by MediCapture) that cause damage to the products.
- Product failures that are the result of: neglect, abuse, misuse, modification, or accidental damage.

USB150-UG-E-070324-MC